

The indispensable instrument Identium®



Identium® Heavy

Impression Material Identium® Heavy

Viscosity	Heavy body
Final hardness	Shore A 60
Setting time	Regular set
Color	Light blue
Hydrophilicity	Extremely high
Packaging	Foil bag 5 : 1
Material type	Vinylsiloxanether

Recommended technique One-step technique (double mix)
Recommended indications Heavy body material for fabricating crowns/bridges, for functional impressions or full or partial denture impressions.

Intro pack 362 ml Identium® Heavy
10 ml Adhesive
1 Cartridge body

Identium® was specially developed for the one-step impression technique and combines the best of both worlds: the advantages of polyether materials coupled with those of A-silicones. Based on the entirely new material of Vinylsiloxanether® (VSXE®), Identium® provides excellent flowability, which in combination with exceptional hydrophilicity (lowest achievable contact angle of less

than 10° after 1 second) ensures optimal flow behavior in a moist environment, even in the narrowest sulcus crevices. Due to its highly elastic properties Identium® exhibits dimensionally accurate recovery and allows very easy removal. It is also odorless and has a neutral taste.

Product properties:

- ✓ Excellent flowability (best shark-fin values)
- ✓ Exceptional hydrophilicity (immediate contact angle <math><10^\circ</math>)
- ✓ Outstanding elastomeric properties of an A-silicone
- ✓ Odorless and neutral taste for relaxing the patient
- ✓ Extra-long intraoral working time (80 seconds), extra-short intraoral setting time (2:30 minutes)
- ✓ Available as Regular set and Fast set, in cartridges 380 ml (5:1) and 50 ml (1:1)

90 seconds quicker and considerably more hydrophilic than polyether

The first real alternative to polyether

User benefits:

- ✓ Wide product range: always the correct product for your requirements
- ✓ Optimum product properties guarantee precise impressions
- ✓ Easy to remove, both from the model and from the patient's mouth
- ✓ Now with shortened intraoral setting time for increased convenience
- ✓ Easy, reliable use in the new jumbo cartridge



Identium®

Areas of application

Area	Medium	Heavy	Light	Scan Medium	Scan Heavy	Scan Light
One-step impression	■	■	■	■	■	■
Fixation impression	■	■		■	■	
Functional impression	■	■		■	■	
Two-step impression						
Monophase impression	■			■		
Pick-up impression	■	■		■	■	
Reline impression	■		■	■		■

■ highly recommended

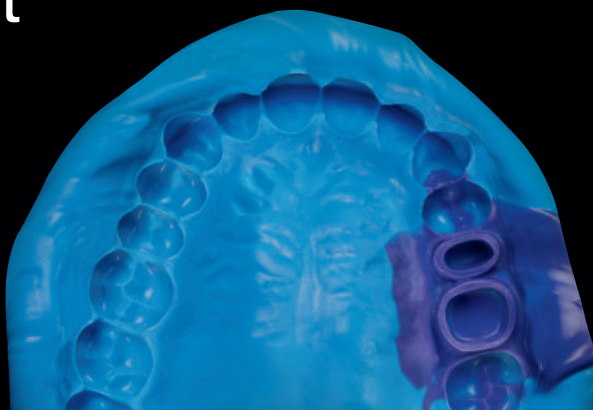
■ recommended

Technical data

Product name	Mixing ratio	Working time at 23°C/74 °F ≤	Working time at 35°C/95 °F ≤	Intraoral setting time at 35°C/95 °F ≤	Total setting time* ≥	Hardness (approx.) Shore	Linear dimensional change (maximum) %	Elastic Recovery test (approx.) %	Strain in compression (approx.) %
Identium® Medium 380 ml	5:1	2 minutes	1 minute 20 seconds	2 minutes 30 seconds	4 minutes 30 seconds	A 60	- 0.20	99.0	2.3
Identium® Medium 50 ml	1:1	2 minutes	1 minute 20 seconds	2 minutes 30 seconds	4 minutes 30 seconds	A 60	- 0.20	99.0	2.3
Identium® Medium Fast 380 ml	5:1	1 minute 15 seconds	40 seconds	2 minutes 15 seconds	3 minutes 30 seconds	A 60	- 0.20	99.0	2.3
Identium® Medium Fast 50 ml	1:1	1 minute 15 seconds	40 seconds	2 minutes 15 seconds	3 minutes 30 seconds	A 60	- 0.20	99.0	2.3
Identium® Heavy 380 ml	5:1	2 minutes	Not applicable	2 minutes 30 seconds	4 minutes 30 seconds	A 60	- 0.20	99.0	2.3
Identium® Heavy 50 ml	1:1	2 minutes	Not applicable	2 minutes 30 seconds	4 minutes 30 seconds	A 60	- 0.20	99.0	2.5
Identium® Heavy Fast 380 ml	5:1	1 minute 15 seconds	Not applicable	2 minutes 15 seconds	3 minutes 30 seconds	A 60	- 0.20	99.0	2.3
Identium® Heavy Fast 50 ml	1:1	1 minute 15 seconds	Not applicable	2 minutes 15 seconds	3 minutes 30 seconds	A 60	- 0.20	99.0	2.5
Identium® Light 50 ml	1:1	2 minutes	1 minute 20 seconds	2 minutes 30 seconds	4 minutes 30 seconds	A 50	- 0.20	99.0	3.8
Identium® Light Fast 50 ml	1:1	1 minute 15 seconds	40 seconds	2 minutes 15 seconds	3 minutes 30 seconds	A 50	- 0.20	99.0	3.8
Identium® Scan Medium 380 ml	5:1	2 minutes	50 seconds	3 minutes 30 seconds	5 minutes 30 seconds	A 60	- 0.20	99.0	2.3
Identium® Scan Heavy 380 ml	5:1	2 minutes	Not applicable	3 minutes 30 seconds	5 minutes 30 seconds	A 60	- 0.20	99.0	2.8
Identium® Scan Light 50 ml	1:1	2 minutes	1 minute 20 seconds	3 minutes 30 seconds	5 minutes 30 seconds	A 46	- 0.20	99.0	3.8

*) Total setting time (removal from the mouth) from the start of mixing.

Identium® Light



Identium® Light is a low viscosity, addition-curing, elastomer impression material on a Vinylsiloxanether® base in a 1:1 cartridge, particularly suitable for the one-step technique (in combination with the high viscosity Identium® Heavy) used for impressions for fabricating crowns/bridges, inlays/onlays and veneers, for functional and implant impressions and impressions with removable restorations.

Advantages

- ✓ Outstanding flowability: even the narrowest sulcus crevices are recorded
- ✓ Optimum hydrophilicity (contact angle < 10°) forms the basis in a moist environment for highly precise impressions
- ✓ Extra-long intraoral working time of 80 seconds, making it also ideal for larger restorations
- ✓ Particularly short intraoral setting time saves valuable practice time
- ✓ Optimal for the one-step technique in combination with Identium® Heavy tray material
- ✓ Also available as quick-setting Fast set in the conventional 50 ml cartridge

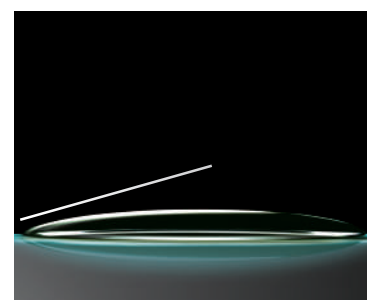
Highest precision due to maximum flowability and best hydrophilicity!



Link to: Identium hydrophilicity video



Syringing the preparation, Dr. Ercole Parnanzini (Padova, Italy)



Identium achieves a contact angle of < 10° after 1 second

Normal pack	1:1
2 x 50 ml cartridge, 12 mixing tips, 12 intraoral tips	
100 ml Regular set	REF 13701
100 ml Fast set	REF 13711