

Panasil[®] initial contact.
Not just, but also for **extreme situations.**



The Panasil® range encompasses low viscosity, medium viscosity, high viscosity and kneadable precision impression materials on an A-silicone base for all impression techniques and requirements. Enduring

success with over 30 years of product experience due to continuous further development and adaptation to current market conditions, while at the same time highly modern and innovative. Simply intelligent.

Product properties:

- ✓ A-silicone with maximum elastic recovery
- ✓ Latest setting characteristics
- ✓ High viscosity materials with optimum dynamic pressure
- ✓ Low viscosity materials with pronounced flowability and optimum hydrophilicity
- ✓ Manual kneading is no longer required
- ✓ Thixotropic, elastomeric materials that are stable when stored

Panasil®:
Over 30 years of
innovation, quality
and experience.

User benefits:

- ✓ Standardized dispensing, reduced material consumption (clean, reliable and quick)
- ✓ Crisply detailed preliminary impression, highly precise wash phase
- ✓ Maximum reliability for the precision impression



Panasil®

Areas of application

Area	binetics Putty Fast	binetics Putty Soft	Putty	Putty Fast	Putty Soft	tray Fast Heavy	tray Soft Heavy	initial contact X-Light	initial contact Light	initial contact Regular	contact plus X-Light	two in one Light
One-step impression						■	■		■	■	■	■
Fixation impression												
Foil impression	■	■	■	■	■				■	■		
Functional marginal contouring		■	■		■							
Functional impression							■					
Two-step impression	■	■	■	■	■	■		■	■		■	■
Monophase impression												
One-step putty-wash impression		■	■		■			■	■	■		
Pick-up impression												
Reline impression								■	■	■	■	■

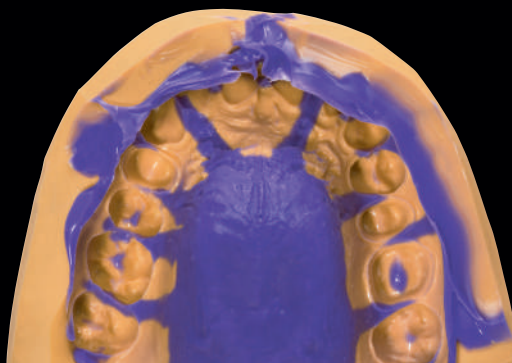
■ highly recommended ■ recommended

Technical data

Product name	Mixing ratio	Working time at 23°C/74 °F ≤	Working time at 35 °C/95 °F ≤	Intraoral setting time at 35°C/95 °F ≤	Total setting time* ≥	Hardness (approx.) Shore	Linear dimensional change (maximum) %	Elastic Recovery test (approx.) %	Strain in compression (approx.) %
Panasil® binetics Putty Fast	5:1	1 minute 30 seconds	Not applicable	2 minutes 30 seconds	4 minutes	A 63	- 0.20	99.5	2.5
Panasil® binetics Putty Soft	5:1	2 minutes	Not applicable	3 minutes	5 minutes	A 56	- 0.20	99.5	3.5
Panasil® Putty	1:1	2 minutes	Not applicable	2 minutes	4 minutes	A 66	- 0.20	99.0	2.7
Panasil® Putty Fast	1:1	1 minute 30 seconds	Not applicable	2 minutes	3 minutes 30 seconds	A 66	- 0.20	99.0	2.7
Panasil® Putty Soft	1:1	2 minutes	Not applicable	2 minutes	4 minutes	A 60	- 0.20	99.0	2.7
Panasil® tray Fast Heavy	5:1	1 minute 20 seconds	Not applicable	2 minutes	3 minutes 20 seconds	A 62	- 0.20	99.7	2.5
Panasil® tray Fast Heavy	1:1	1 minute	Not applicable	2 minutes	3 minutes	A 62	- 0.20	99.5	3.0
Panasil® tray Soft Heavy	5:1	2 minutes	Not applicable	2 minutes	4 minutes	A 55	- 0.20	99.7	3.0
Panasil® tray Soft Heavy	1:1	2 minutes	Not applicable	2 minutes	4 minutes	A 55	- 0.20	99.5	3.0
Panasil® tray Soft Heavy Fast	1:1	1 minute	Not applicable	2 minutes	3 minutes	A 55	- 0.20	99.5	3.0
Panasil® initial contact Regular	1:1	1 minute 30 seconds	1 minute	2 minutes 30 seconds	4 minutes	A 46	- 0.20	99.7	3.0
Panasil® initial contact Regular Fast	1:1	1 minute	30 seconds	2 minutes	3 minutes	A 46	- 0.20	99.7	3.0
Panasil® contact two in one Light	1:1	2 minutes	1 minute	2 minutes	4 minutes	A 46	- 0.20	99.7	3.5
Panasil® initial contact Light	1:1	1 minute 30 seconds	1 minute	2 minutes 30 seconds	4 minutes	A 46	- 0.20	99.3	3.5
Panasil® initial contact Light Fast	1:1	1 minute	30 seconds	2 minutes	3 minutes	A 46	- 0.20	99.3	3.5
Panasil® initial contact X-Light	1:1	1 minute 30 seconds	1 minute	2 minutes 30 seconds	4 minutes	A 46	- 0.20	99.3	3.5
Panasil® initial contact X-Light Fast	1:1	1 minute	30 seconds	2 minutes	3 minutes	A 46	- 0.20	99.3	3.5
Panasil® contact plus X-Light	1:1	2 minutes	1 minute	2 minutes	4 minutes	A 46	- 0.20	99.7	5.0

*) Total setting time (removal from the mouth) from the start of mixing.

Panasil® Putty, Putty Soft and Putty Fast

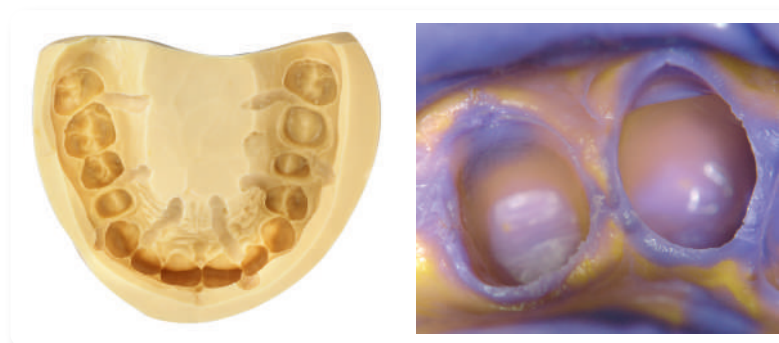



Panasil® Putty is a kneadable, elastomer, addition-curing precision preliminary impression material on a vinyl polysiloxane base for taking preliminary impressions with different degrees of final hardness and setting characteristics. Available as Putty and Putty Fast for the two-step impression technique and Putty Soft for the one-step putty-wash technique.



Advantages


- ✓ Best elastomer properties ensure dimensionally accurate elastic recovery and easy, reliable removal from the mouth
- ✓ Good pressure build-up in combination with Panasil® Light bodies ensure highly precise results
- ✓ Best price/performance ratio, highly economical use
- ✓ Fast set: short intraoral setting time (2 minutes) with a total working time tailored to the needs of the practice (1:30 minutes)
- ✓ Soft: reduced final hardness for even easier removal from the mouth


The modern classic with over 30 years experience!





Normal pack **Putty** 1:1
 1 x 450 ml catalyst,
 1 x 450 ml base, 2 dispensing scoops
 900 ml  REF 11101

Normal pack **Fast set**  1:1
 1 x 450 ml catalyst,
 1 x 450 ml base, 2 dispensing scoops
 900 ml  REF 11141

Normal pack **Soft** 1:1
 1 x 450 ml catalyst,
 1 x 450 ml base, 2 dispensing scoops
 900 ml  REF 11121

Economy pack **Putty** 1:1
 4 x 450 ml catalyst,
 4 x 450 ml base, 2 dispensing scoops
 3600 ml  REF 11103

Economy pack **Fast set**  1:1
 4 x 450 ml catalyst,
 4 x 450 ml base, 2 dispensing scoops
 3600 ml  REF 11143

Economy pack **Soft** 1:1
 4 x 450 ml catalyst,
 4 x 450 ml base, 2 dispensing scoops
 3600 ml  REF 11123