

Panasil<sup>®</sup> initial contact.  
Not just, but also for **extreme situations.**



The Panasil® range encompasses low viscosity, medium viscosity, high viscosity and kneadable precision impression materials on an A-silicone base for all impression techniques and requirements. Enduring

success with over 30 years of product experience due to continuous further development and adaptation to current market conditions, while at the same time highly modern and innovative. Simply intelligent.

### Product properties:

- ✓ A-silicone with maximum elastic recovery
- ✓ Latest setting characteristics
- ✓ High viscosity materials with optimum dynamic pressure
- ✓ Low viscosity materials with pronounced flowability and optimum hydrophilicity
- ✓ Manual kneading is no longer required
- ✓ Thixotropic, elastomeric materials that are stable when stored

Panasil®:  
Over 30 years of  
innovation, quality  
and experience.

### User benefits:

- ✓ Standardized dispensing, reduced material consumption (clean, reliable and quick)
- ✓ Crisply detailed preliminary impression, highly precise wash phase
- ✓ Maximum reliability for the precision impression



# Panasil®

## Areas of application

Area	binetics Putty Fast	binetics Putty Soft	Putty	Putty Fast	Putty Soft	tray Fast Heavy	tray Soft Heavy	initial contact X-Light	initial contact Light	initial contact Regular	contact plus X-Light	two in one Light
One-step impression						■	■		■	■	■	■
Fixation impression												
Foil impression	■	■	■	■	■				■	■		
Functional marginal contouring		■	■		■							
Functional impression							■					
Two-step impression	■	■	■	■	■	■		■	■		■	■
Monophase impression												
One-step putty-wash impression		■	■		■			■	■	■		
Pick-up impression												
Reline impression								■	■	■	■	■

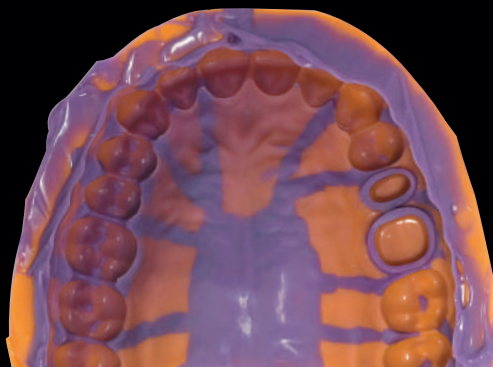
■ highly recommended      ■ recommended

## Technical data

Product name	Mixing ratio	Working time at 23°C/74 °F ≤	Working time at 35 °C/95 °F ≤	Intraoral setting time at 35°C/95 °F ≤	Total setting time* ≥	Hardness (approx.) Shore	Linear dimensional change (maximum) %	Elastic Recovery test (approx.) %	Strain in compression (approx.) %
Panasil® binetics Putty Fast	5:1	1 minute 30 seconds	Not applicable	2 minutes 30 seconds	4 minutes	A 63	- 0.20	99.5	2.5
Panasil® binetics Putty Soft	5:1	2 minutes	Not applicable	3 minutes	5 minutes	A 56	- 0.20	99.5	3.5
Panasil® Putty	1:1	2 minutes	Not applicable	2 minutes	4 minutes	A 66	- 0.20	99.0	2.7
Panasil® Putty Fast	1:1	1 minute 30 seconds	Not applicable	2 minutes	3 minutes 30 seconds	A 66	- 0.20	99.0	2.7
Panasil® Putty Soft	1:1	2 minutes	Not applicable	2 minutes	4 minutes	A 60	- 0.20	99.0	2.7
Panasil® tray Fast Heavy	5:1	1 minute 20 seconds	Not applicable	2 minutes	3 minutes 20 seconds	A 62	- 0.20	99.7	2.5
Panasil® tray Fast Heavy	1:1	1 minute	Not applicable	2 minutes	3 minutes	A 62	- 0.20	99.5	3.0
Panasil® tray Soft Heavy	5:1	2 minutes	Not applicable	2 minutes	4 minutes	A 55	- 0.20	99.7	3.0
Panasil® tray Soft Heavy	1:1	2 minutes	Not applicable	2 minutes	4 minutes	A 55	- 0.20	99.5	3.0
Panasil® tray Soft Heavy Fast	1:1	1 minute	Not applicable	2 minutes	3 minutes	A 55	- 0.20	99.5	3.0
Panasil® initial contact Regular	1:1	1 minute 30 seconds	1 minute	2 minutes 30 seconds	4 minutes	A 46	- 0.20	99.7	3.0
Panasil® initial contact Regular Fast	1:1	1 minute	30 seconds	2 minutes	3 minutes	A 46	- 0.20	99.7	3.0
Panasil® contact two in one Light	1:1	2 minutes	1 minute	2 minutes	4 minutes	A 46	- 0.20	99.7	3.5
Panasil® initial contact Light	1:1	1 minute 30 seconds	1 minute	2 minutes 30 seconds	4 minutes	A 46	- 0.20	99.3	3.5
Panasil® initial contact Light Fast	1:1	1 minute	30 seconds	2 minutes	3 minutes	A 46	- 0.20	99.3	3.5
Panasil® initial contact X-Light	1:1	1 minute 30 seconds	1 minute	2 minutes 30 seconds	4 minutes	A 46	- 0.20	99.3	3.5
Panasil® initial contact X-Light Fast	1:1	1 minute	30 seconds	2 minutes	3 minutes	A 46	- 0.20	99.3	3.5
Panasil® contact plus X-Light	1:1	2 minutes	1 minute	2 minutes	4 minutes	A 46	- 0.20	99.7	5.0

\*) Total setting time (removal from the mouth) from the start of mixing.

# Panasil® tray Soft Heavy and Fast Heavy

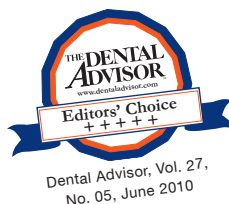


Panasil® tray is a high viscosity, addition-curing, elastomer precision impression material on a vinyl polysiloxane base with different degrees of final hardness and setting characteristics: The higher final hardness of the quick-setting tray Fast allows it to be used for the two-stage impression technique, as it can be easily trimmed; tray Soft is ideal for the two-step technique due to its lower final hardness.

## Advantages





- ✓ Best elastomer properties ensure dimensionally accurate elastic recovery and easy, reliable removal from the mouth
- ✓ Easy, hygienic mixing at the press of a button in the practical 380 ml jumbo cartridge from Kettenbach or in the conventional 50 ml cartridge
- ✓ Fast set: short intraoral setting time (2 minutes) with a total working time tailored to the needs of the practice (1:20 minutes)
- ✓ Soft: reduced final hardness for even easier removal from the mouth

Positionally stable  
without ifs  
and buts



Link to:  
Application video



Intro pack 	5:1	Refill pack 	5:1
380 ml cartridge, 10 dynamic mixers		2 x 380 ml cartridge	
380 ml Soft REF 14706		760 ml Soft REF 14707	
380 ml Fast set >>>> REF 14704		760 ml Fast set >>>> REF 14705	
Normal pack <b>Soft</b>	1:1	Normal pack <b>Soft Fast</b> >>>>	1:1
2 x 50 ml cartridge, 6 mixing tips		2 x 50 ml cartridge, 6 mixing tips	
100 ml Soft 	REF 13541	100 ml 	REF 13561